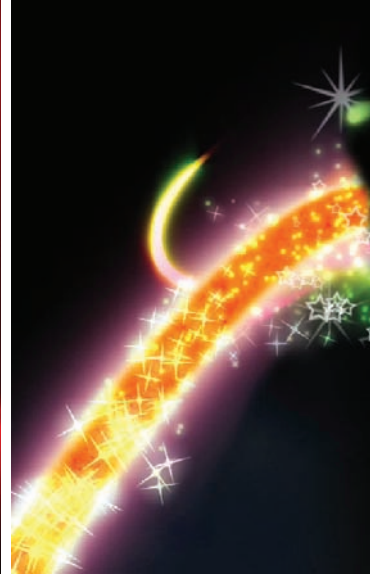
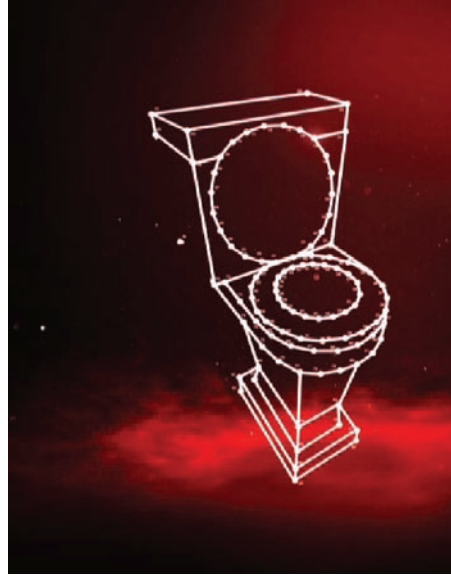


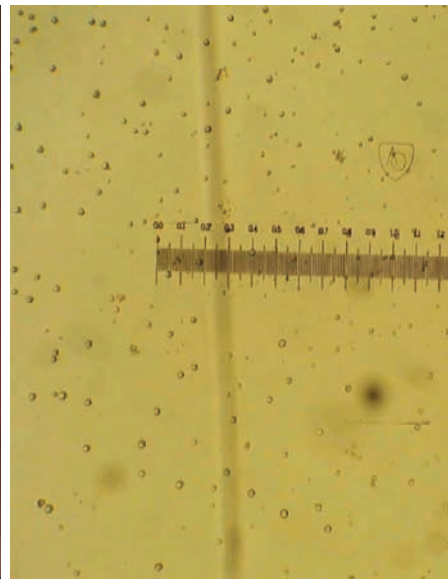


www.nicework.co.za



Client:
The Brief:

NICEWORK SHOWREEL 2009



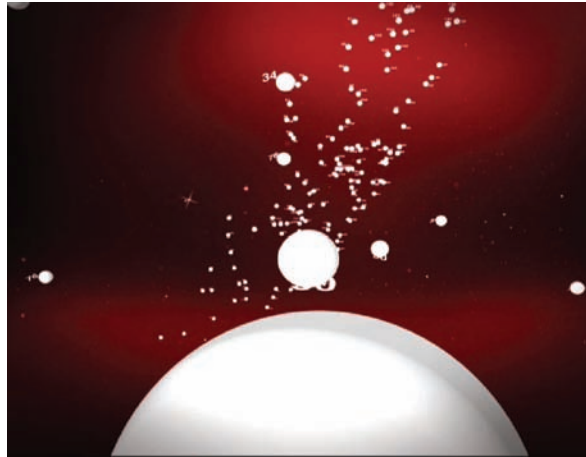
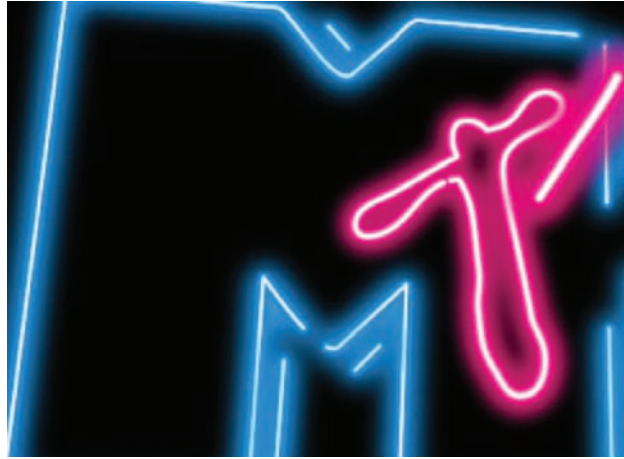
THE SHOWREEL 2009

Our showreel is a special place where we have free reign to produce a creative product that truly expresses who we are and what we are about. It's a talking piece that excites clients and allows us to review what we have achieved over the past year.

Our 2009 showreel is a showcase of some of the best commercial, presentation and graphic design work we created in that year, featuring projects for DSTV Nigeria, MTV, Smirnoff, Cell C, Breinstorm (LISOF), Beacon, Nestle, Coke, Nike, ZAIN, Channel O, Tennant McKay, The Ebling Group, Bite Animation (Clover Super M, Cell C Couch Night).

Budgets were limited and timeframes were short but we managed to pull of something truly spectacular with blood, sweat, tears and little help from our friends. It's full of design goodness and some splendid eye candy. Take a look.





Credits:

Designers:

ROSS DRAKES
DONOVAN PUGH
ANTHONY MARIS
GRAEME CARR
GORDON BAKKES

2D Animation:

ROSS DRAKES
DONOVAN PUGH
ANTHONY MARIS
GORDON BAKKES

3D Animation:

JUSTIN WINGATE
TYRONE WRAIGHT

Special Thanks to

EVY KATZ

from Humanoid for helping
us with the edit.

Some of the work on this reel
was produced and directed by:

TENNANT MCKAY
BITE ANIMATION
and AMORPHOUS

